

Role Details

Job ad reference	Expression of Interest
Role title	Registered Nurse (Surgical) - Expression of Interest
Status	Temporary full time; Temporary part time Please note, future vacancies of a temporary full time and part time nature may also be filled through this recruitment process.
Location	Southport Note that this position may be required to work throughout the Gold Coast Hospital and Health Service and that the positions primary work location may change based on operational requirements
Unit/Branch	Surgical
Division	Surgical and Critical Care Gold Coast Hospital and Health Service
Closing date	Ongoing Application will remain current for the duration of the vacancy
Classification	Nurse Grade 5
Salary	\$80 342 - \$103 053 per annum \$3 079.50 - \$3 950.00 per fortnight \$40.51 - \$51.97 per hour
Contact name	Amy Hopkins / Kristen Simmons
Contact number	(07) 5687 2617
Online Applications	www.smartjobs.qld.gov.au

Purpose of the Role

The Registered Nurse is responsible for providing quality nursing services within a health service setting, consulting with the Nurse Unit Manager or team leader in the coordination and standards of care for patients within the unit.

This role will work collaboratively within the context of a multidisciplinary team in the delivery of evidence-based person-centred care and service planning, supporting a culture reflective of the principles of the Magnet Recognition Program®.

As the Registered Nurse, you will demonstrate competence in the provision of nursing care as specified by registration requirements, NMBA standards and codes, educational preparation, relevant legislation and context of care.

Our Values

Gold Coast Hospital and Health Service is committed to its six guiding principles which are at the core of all positions and articulate the behaviours that are required when working within the Health Service:



Whilst we implement our strategic objectives to be recognised as a centre of excellence for world class health care, our [values](#) provide the framework to focus our individual behaviours and performance outcomes.

Professional Practice Model

Gold Coast Health's [Professional Practice Model](#) (PPM) was developed as part of our journey to Magnet recognition. It depicts how we practice, collaborate, communicate and develop professionally to provide safe, high quality, person-centred care.

Organisational Alignment

Gold Coast Health has a Core Capability Framework (CCF) with five core capability groups; Personal Attributes; Building Relationships, Results Focused, Business Enablers, Leadership and People Management. Under each of the five capability groups, individual capabilities are identified which are essential to drive performance excellence across our workforce. Below outlines the five core role capabilities required to deliver against the key duties and accountabilities of this role, however, all capabilities listed within the framework remain essential to successfully perform at Gold Coast Health.

Capabilities are aligned to Leader Profiles; Leading Self, Leading Others, Leading Leaders and Leading Executives. The Leader Profile and Core Capabilities for this role are detailed below. Visit the [Core Capability Framework](#) (CCF) for further detail.

The sixth domain of the CCF is the Professional Capabilities domain. Visit the [Nursing/Midwifery Career Pathways](#) factsheet for further detail. The Key Duties and Accountabilities section in this role description is based on the Nursing/Midwifery Career Pathways.

Leader Level: Leading Self

Core Role Capabilities

Personal Attributes	Individual behaviours influenced by our values and ethical compass	Leading Self Act with Integrity - Work within the limits of level and delegation, acknowledging mistakes, seeking guidance and upholding ethics
Build Relationships	Shape and maximise relationships with colleagues, patients and the community	Leading Self Work Collaboratively - Work collaboratively within teams, communicating progress, providing information, helping others and acknowledging shared effort
Results Focused	Drive and influence successful organisational outcomes	Leading Self Demonstrate Accountability - Take responsibility for actions both professionally and personally, acting within authority levels, acknowledging mistakes and seeking opportunities to continually learn and grow
Business Enablers	Boost effective service delivery and champion change management	Leading Self Leverage Technology - Demonstrate understanding of the use of technology, complying with policies and protocols
Leadership and People Management	Inspire, engage and build our workforce	Leading Self Build and Develop our People - Contribute to developing capability to deliver services, identifying learning opportunities and continually seeking feedback

Magnet Recognition Program®

Gold Coast Health is the first whole health service in Australia to achieve Magnet Recognition®, a four-yearly credential that is the hallmark of excellence and the highest international recognition healthcare organisations can achieve for nursing and midwifery practice.



Magnet organisations are renowned for exceptional patient care and outcomes; nursing and midwifery professionalism; support for lifelong learning; high levels of staff and patient satisfaction; values-based work environments; research and innovation.

About Nursing and Midwifery Services

Gold Coast Health nurses and midwives are well placed to contribute to the organisation's vision to have the best health outcomes in Australia, having achieved international recognition for excellence in patient care and outcomes through the prestigious Magnet Recognition Program®. Over 4,800 nurses and midwives contribute to building a culture of success through the provision of high-quality care, innovation and professional governance. Staff take pride in their work and feel empowered to perform at a high level.

Initiatives at Gold Coast Health such as the Nursing and Midwifery Professional Recognition program (NMPRP) aim to create a culture of excellence through promoting the professional practice requirements set by the Nursing and Midwifery Board of Australia and by recognising, rewarding and celebrating expertise in nursing and midwifery practice.

Key Duties and Accountabilities

- Fulfill the responsibilities of this role in accordance with Queensland Public Service, the Gold Coast Hospital and Health Service (GCHHS) values.
- Comply with the [Code of Conduct for the Queensland Public Service](#) and all policies and procedures.
- Comply with the [National Safety and Quality Health Service Standards](#) and the Gold Coast Health [Clinical Governance Framework](#) in all areas of your practice.

CLINICAL

- Maintain and role model advanced person-focused, evidence-based care including the appropriate delegation of activities to Assistants in Nursing, Enrolled Nurses and other Registered Nurses.
- Assess, plan, implement and evaluate nursing care in collaboration with individuals, peers and the healthcare team to achieve goals and health outcomes.
- Make appropriate referral to and consult with peers, other relevant health professionals/service providers/ community and support services.

EDUCATION

- Actively engage in professional development of self and support the development of others, including students.
- Engage with consumers to support shared decision making relevant to their care and health literacy within scope of role
- Participate in activities related to clinical, professional and organisational learning to contribute to health care outcomes.

LEADERSHIP

- Role model and uphold nursing and HHS/directorate/facility/service standards, values, codes and guidelines.
- Collaborate with others to provide leadership for professional and clinical practice and provision of health services across the continuum of care.
- Engage with the clinical nurse and others to achieve best practice outcomes.

SYSTEM SUPPORT

- Role model and uphold Work Health and Safety policies and procedures.
- Awareness of human resource, rostering, business planning and information management supportive frameworks and their application.
- Participate in the development, review and evaluation of clinical nursing standards, guidelines, protocols, pathways, procedures, standards and systems of work.

RESEARCH

- Use evidence-based research findings and experience to support clinical decision-making.
- Actively support and lead quality improvement and research initiatives within the work unit, contributing to the use of evidence-based practice to facilitate improved patient outcomes.

- Provide high standards of evidence-based nursing care and documentation, to facilitate quality patient outcomes, in accordance with the National Safety and Quality Health Service Standards and organisational policies and procedures.

Work, Health and Safety

- Follow policies, procedures and instructions relating to work health and safety that are relevant to the work being undertaken to ensure high quality and safe services in the workplace.
- Take reasonable care for your own health, safety and wellbeing and take reasonable care to ensure that your acts or omissions do not adversely affect the health, safety and wellbeing of others.
- Employees who are appointed to the GCHHS are accountable for information security, management and appropriate use, in accordance with legislation, standards, policies and procedures.
- Comply with reasonable instructions that are provided for the safety of you and others at the workplace.

Mandatory Qualifications / Professional Registration / Other Requirements

- A Bachelor of Nursing or equivalent is a mandatory qualification for this position.
- It is a requirement to have recent experience in the care of patients in a postoperative surgery environment.
- Registration as a Registered Nurse under the Health Practitioner Regulation National Law Act 2009 with a current annual practicing certificate from the Australian Health Practitioner Regulation Agency is essential. Certified copies of the required information must be provided to the appropriate supervisor/manager prior to the commencement of clinical duties.
- It is a condition of employment in this role for the employee to be, and remain, vaccinated against the following vaccine preventable diseases during their employment ([Health Employment Directive No. 01/16](#)); measles, mumps, rubella (MMR), varicella (chicken pox), pertussis (whooping cough), hepatitis B.
- It is a condition of employment in this role for new employees to GCHHS to undertake a tuberculosis screening, to identify if the tuberculosis vaccination may be required in accordance with the Queensland Health Protocol.
- A postgraduate qualification within a relevant specialty will be highly regarded.
- This position requires effective computer skills to use clinical information systems and other applications relevant to role.
- This position may be required to work across Gold Coast Hospital and Health Service.

How to Apply

Please submit the following for the panel to assess your suitability:

- Your **resume**, including a comprehensive employment history, the qualifications you hold and the contact details for at least two referees (Referees should have a thorough knowledge of your capabilities, work performance and conduct within the previous two years).
- A **cover letter** (no more than 2 pages) outlining your suitability for the role. In your response, please consider the Core Role Capabilities listed under 'Organisational Alignment' using recent examples of your experience, aligned to the 'Key Duties and Accountabilities' listed above. Please note the **Role Specific Information** on the following page provides the specific context of the advertised role.

Submit your application via www.smartjobs.qld.gov.au

Only those persons eligible to work in Australia may be employed by Queensland Health. Prospective employees are required to provide proof of identity and documentary evidence of their [right to work in Australia](#).

Further Information

For further information about this opportunity and the benefits and conditions of [working at Gold Coast Health](#) please refer to the Information for Applicants document attached with this Smart Jobs advertised vacancy.

Role-Specific Information

About the Service line/Team/Units

Surgical Units (C2E and C2W) are two 28 bedded surgical units side by side, they are an acute ward where safety and patient-centred care is the priority. We aim to provide safe, quality, patient, and family-focused care, whilst harnessing the value of each team member. Delivery of high-quality care to patients of advanced acuity within the Gastrointestinal (GI), Gastroenterology (GE) and General Surgical Services. We take pre operative, post operative patients as well as pre and post endoscopic patients Emergency department admissions and ICU step downs.

Surgical Inpatient Unit

The Surgical Inpatient Unit is a 28 Bed Unit that specialises in the delivery of Tertiary level care in Urology, Gynaecology, Gynae-oncology, Major Head and Neck surgery as well as General Ear Nose and Throat (ENT), Maxillo-Facial and Plastics care.

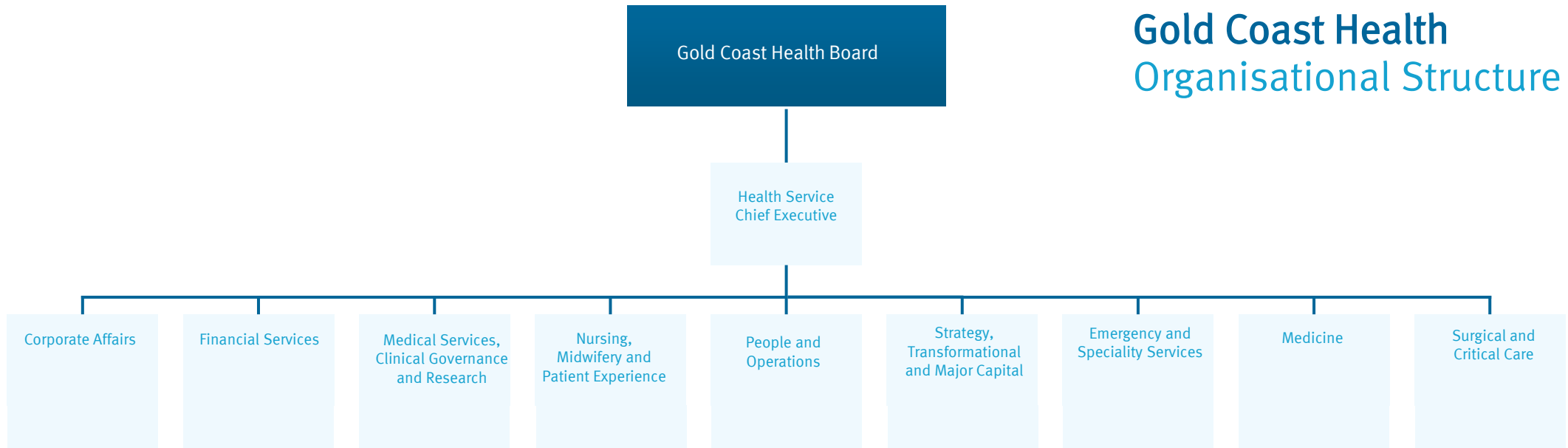
About the Role

- The Registered Nurse (RN) ensures that both clinical practice and professional standards are identified and maintained in the delivery of patient care.
- In conjunction with the NUM, CF and CN's, the RN will assist in the provision of educational training to other nursing staff, and act as a role model and preceptor to other staff.
- The RN will assist with supporting the EN during the shift ensuring work within scope of practise is performed.
- The RN is expected to participate in formulating, implementing and evaluating objectives, policies and procedures of nursing care for the variety of patients. It is also expected the RN will actively participate and promote a nursing standard portfolio.
- The RN must be proactive in own professional development and maintain competencies, identify learning needs and actively seek opportunities to expand skills and knowledge.

Reporting Relationships

This position will report to the applicable Nurse Unit Manager of the above units

Gold Coast Health Organisational Structure



Our philosophy

Always Care.

Our vision

We will have the best health outcomes in Australia.

Our purpose

To be a leader in compassionate, sustainable, highly-reliable healthcare.

Our values



Integrity	To be open and accountable to the people we serve
Community first	To have the patient's and the community's best interests at heart
Excellence	To strive for outstanding performance and outcomes
Respect	To listen, value and acknowledge each other
Compassion	To treat others with understanding and sensitivity
Empower	To take ownership and enable each other to achieve more