

Senior Oral Health Therapist

Our Destination 2030: Great Care for Central Queenslanders strategy will shape the future of healthcare across our region, and support our aim for Central Queenslanders to be amongst the healthiest in the world. Great staff working in great teams with a culture of supporting and investing in our people's future. Find out more visit online

www.health.qld.gov.au/cq/destination-2030

Great People, Great Place to Work



Role Details

Role Title	Senior Oral Health Therapist	Classification	HP4
Status	Permanent Full Time	Salary	\$62.75 - \$67.53 p.h.
Unit/Facility	Oral Health Services	Total Package	Up to \$152,776 p.a.
Location	Emerald	Contact	Liza Pretorius (07) 4920 7553
Job Ad Reference	CH4D559699	Closing Date	Tuesday, 21 May 2024

*Please note: there may be a requirement to work at other facilities located across Central Queensland Hospital and Health Service

Central Queensland Hospital and Health Service Oral Health Services

Central Queensland (CQ) Oral Health Services strives to provide evidence based dental treatment and promotion to our eligible clientele and to maintain a fair and equitable wait list for the members of our community whilst maintaining a supportive work environment for staff.

Oral Health Service comprises of eleven adult clinics based within the geographical boundaries of the Central Queensland Hospital and Health Services, including: Rockhampton, Capricorn Coast, Gladstone, Emerald, Springsure, Blackwater, Moura, Biloela, Mount Morgan, Woorabinda and Capricornia Correctional Centre.

The Opportunity

Provide clinical and health promotional leadership, management and expertise while ensuring a high standard of oral health care is provided to all eligible clients of the Oral Health Service through the delivery of Oral Health Therapy services within individual scope, in addition to promoting oral health at an individual and community level within Central Queensland Hospital and Health Service (CQHHS).

CQ Health
Living our values

Care

We are attentive to individual needs and circumstance

Integrity

We are consistently true, act diligently and lead by example

Respect

We will behave with courtesy, dignity and fairness in all we do

Commitment

We will always do the best we can all of the time



Total Package

- 12.75% employer superannuation contribution
- Annual leave loading 17.5%
- Salary packaging
- Work/life balance, variety and flexibility
- Employee Assistance Program

Additional benefits to this role include:

- Professional development leave
- Professional development allowance

The Role

Accountabilities and responsibilities clarify the competency level and skills required to perform the duties of the role successfully. The ideal applicant will be someone who can best demonstrate their fit to both the organisation factors above and the accountabilities and responsibilities factors below:

The essential requirements for this role are:

Quality, Safety and Risk

- Follow defined service quality standards, occupational health and safety policies and procedures relating to the work being undertaken in order to ensure high quality, safe services and workplaces.
- Identify and avoid or minimise risks to patients, employees, volunteers, visitors and the institution.
- Participate in quality and safety activities as required to promote improved service delivery and ensure safety and reliability underpins all we do.

Oral Health Function

- Demonstrate seniority through clinical leadership of dental therapy and dental hygiene practice by providing high level clinical duties of an oral health therapist in accordance with the requirements of the Dental Board of Australia.
- Actively contribute to the oral health promotion of clients and individuals.

Knowledge Management

- Be actively involved in clinical research and/or professional development activities for dental and oral health therapists.
- Assist in the collection, collation and reporting of statistical data for the Health Service.

Leadership and Management

- Provide operational supervision of teams to enable staff to meet performance targets, work efficiently and reduce down-time.
- Responsible for the supervision of students. This position may be required to manage same discipline staff.
- Supervise and/or participate in complaint resolution involving staff and/or clients.
- Participate in the recruitment of staff where required.

Communication and Teamwork

- Provide high level communication to clients, staff within your team, across district, management and across the state where required.
- Work as a member of a team, foster team spirit and build and maintain cooperative relationships.

Quality Improvement

- Participate, monitor and contribute to quality improvement processes and planning and resource management where required.

Mandatory Qualifications / Professional Registration / Other Requirements

- **Mandatory qualifications:** Possession of a Bachelor of Oral Health (or equivalent) and registration with the Australian Health Practitioner Regulation Agency (AHPRA).
 - Radiation Use Licence issued under the *Radiation Safety Act 1999*, with an appropriate authority.
- **Proof of identity documents:** Candidates must provide certified copies of requested proof of identity documents for the purposes of General Criminal History and National Police Certificate checks.
- **Proof of qualification:** Appointment to this position requires proof of qualification and if applicable registration or membership with the appropriate registration authority or association. Certified copies of the required information must be provided to the appropriate supervisor/manager, prior to the commencement of clinical duties.
- **Aged care criminal history clearance:** Potential applicants are advised that the *Aged Care Act 1997* requires Queensland Health employees and volunteers of aged care services (applicable areas only) to have a current National Police Certificate. Queensland Health will facilitate the applicants obtaining the above check.
- **Disclosure of Serious Disciplinary History:** Under the [Public Sector Act 2022](#), applicants are required to disclose any previous serious disciplinary action taken against them.
- **Licence to operate vehicle:** This position requires the incumbent to operate a class C motor vehicle and an appropriate licence endorsement to operate this vehicle is required. Proof of this endorsement must be provided prior to the commencement of duty.
- **Travel:** Travel throughout the health service may be required as part of this position.
- **Vaccine Preventable Diseases:** It is a condition of employment for this role for the employee to be, and remain, vaccinated against the following vaccine preventable diseases during their employment [Health Employment Directive No. 01/16](#):
 - Measles, Mumps, Rubella (MMR)
 - Varicella (chicken pox)
 - Pertussis (whooping cough)
 - Hepatitis B
 - All new employees who will be working in clinical areas must be assessed for their risk of tuberculosis and screening undertaken if required.

Further vaccinations may be required due to risks for a role; examples include:

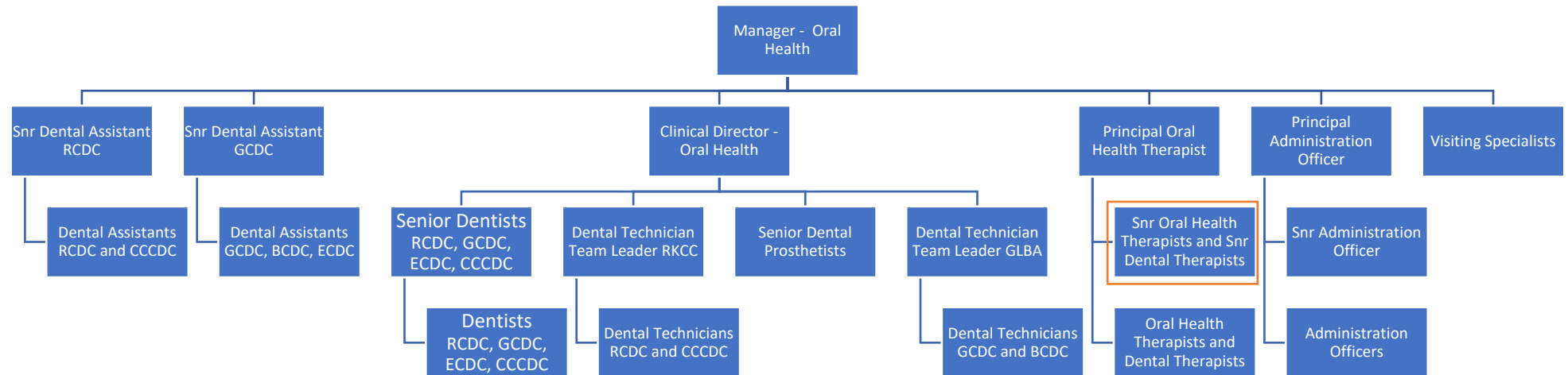
 - Hepatitis A – Workers in regular contact with untreated sewerage
 - Q Fever – Research or Laboratory staff regularly handling specimens
 - Influenza

How you will be Assessed

You will be assessed on your ability to demonstrate the best fit for the role. Within the context of the responsibilities described under 'The Role', the ideal applicant will be someone who can demonstrate the following:

- An understanding of the importance of quality, safety and risk in a healthcare environment.
- High level of oral therapy clinical knowledge, expertise and skill.
- Demonstrated ability to work at a higher level as a cooperative member of an oral health team and to rapidly acquire sound knowledge of the operations and functions of an oral health team within Oral Health Services.
- Demonstrated ability to participate in substantial relevant professional development, research and continuous learning to ensure the progression of individual clinical standards.
- Proven higher level day to day operational management of a small multidisciplinary team with the ability to work autonomously and utilise discretion in decision making, meet deadlines, establish work priorities, organise meetings and appointments and work as an efficient senior team member.

- Highly developed interpersonal, communication and negotiation skills, incorporating the ability to supervise staff and liaise effectively with staff at all levels of the organisation.
- Demonstrated ability to work effectively with individuals, groups and as a member of the multidisciplinary team.
- Demonstrated high level ability to lead change through quality and service improvement activities and provide clinical practice supervision and mentoring and role-modelling of dental/oral health therapists.

Organisational Chart

- RCDC – Rockhampton Community Dental Clinic
- GCDC – Gladstone Community Dental Clinic
- ECDC – Emerald Community Dental Clinic
- BCDC – Biloela Community Dental Clinic
- CCCDC – Capricorn Coast Community Dental Clinic
- RKCC – Rockhampton and Capricorn Coast
- GLBA – Gladstone and Biloela