

**LOGAN HOSPITAL
EXPANSION**

A better way to care.



BE PART OF SOMETHING SPECIAL

Your career at Logan Hospital

Quality healthcare every day

**Metro South
Health**



**Queensland
Government**

LOOKING FOR THE NEXT BIG THING? YOU'VE FOUND IT.

Thank you for your interest in working at Logan Hospital

Logan Hospital is a place to make a big difference—for the community, and for your career.

When you join 'Team Logan', you'll be welcomed into a tight-knit community, in one of the most culturally diverse regions in the country.

You'll be part of a team that's energetic, fearless and not afraid to take on new things—where together, we strive to make a real difference for our community.

And with one of Queensland's largest ever hospital expansions underway, you'll have all the benefits of working for a big metropolitan hospital, while being part of a 'small town' team that values who you are and what you do.



100,000+
emergency
presentations
per year



89,000+
inpatient
admissions
per year



27%
of the Logan
population was
born overseas



3.2%
of the Logan population
identifies as Aboriginal
and/or Torres Strait
Islander



JINGERI JIMBELUNG

Welcome friend, you are on Yugambeh Country

We acknowledge the people of the Yugambeh language group, the traditional custodians of the country on which Logan Hospital now stands, and their connection to land, wind, water and community.

We pay our respects to their culture and to Elders, past, present, future and emerging.

About Logan Hospital

Logan Hospital is the major health centre for the Logan region—one of the fastest growing regions in Queensland. We’ve grown from a 48-bed community hospital in 1990 to a 485-bed hospital today, mirroring the rapid growth in population.

We provide acute medical, surgical, rehabilitation, maternity, cardiology, orthopaedics, renal and other specialty services for children and adults.

We’re a teaching and research hospital with strong relationships with several universities—and we’re part of a network that includes one of Queensland’s leading tertiary and research hospitals, the Princess Alexandra Hospital.

We’re also a “digital hospital”, which gives our clinicians access to real-time patient information through digital workstations and a fully electronic medical record.

We’re proud of our history and excited about a future filled with better ways to care.

Metro South Health

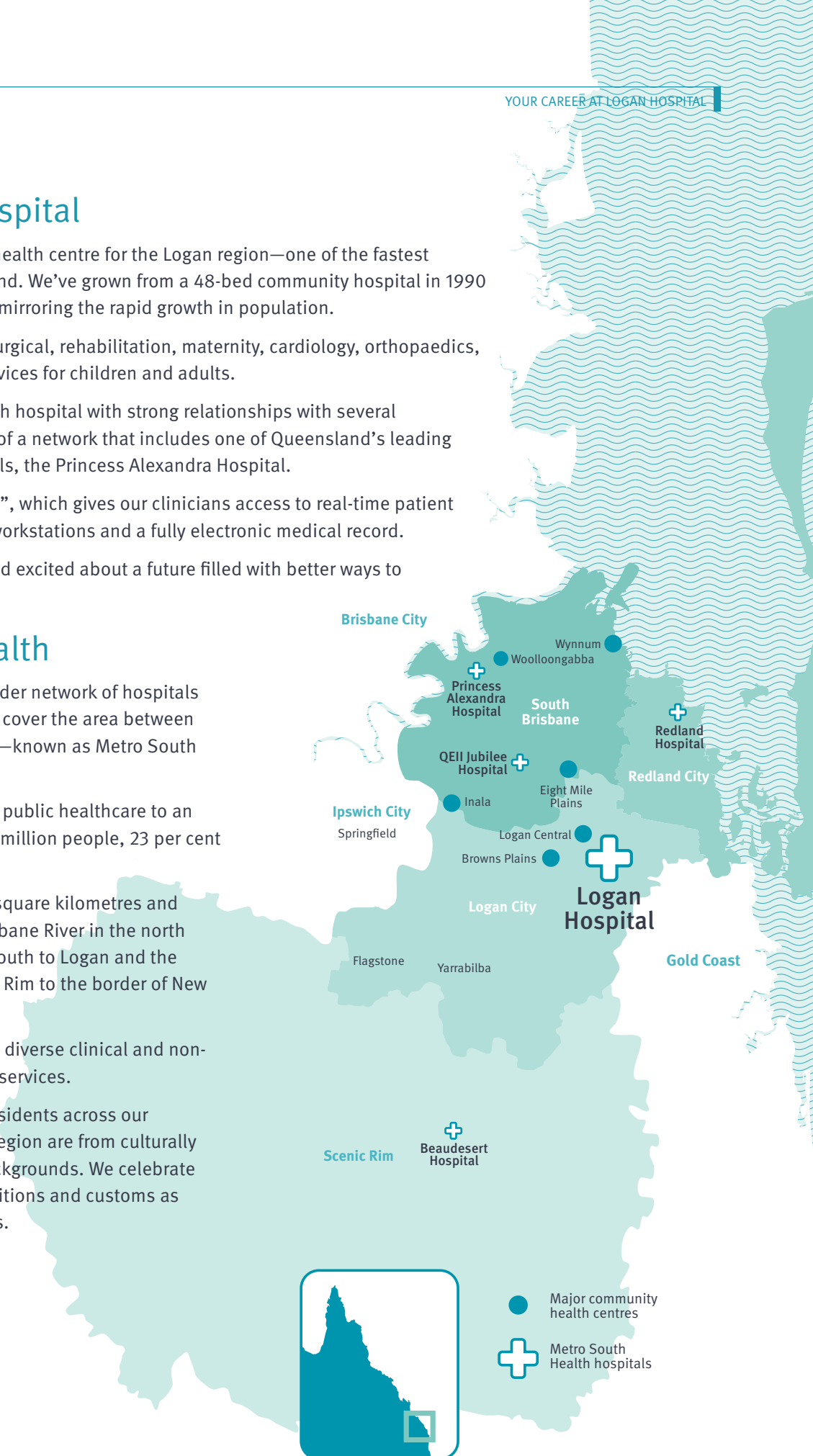
Logan Hospital is part of a wider network of hospitals and healthcare facilities that cover the area between Brisbane and the Gold Coast—known as Metro South Health.

Metro South Health provides public healthcare to an estimated population of one million people, 23 per cent of Queensland’s population.

Our catchment spans 3,856 square kilometres and covers the area from the Brisbane River in the north to Redland City in the east, south to Logan and the eastern portion of the Scenic Rim to the border of New South Wales.

We employ more than 17,000 diverse clinical and non-clinical staff right across our services.

A significant proportion of residents across our hospital and health service region are from culturally and linguistically diverse backgrounds. We celebrate diversity of ideas, skills, traditions and customs as one of our greatest strengths.



COMMITTED TO THE BEST HEALTHCARE FOR EVERYONE IN OUR COMMUNITY

Our strategic focus

Metro South Health's *Strategic Plan* is our key guiding document that defines our vision and objectives. It outlines how we will work together to provide quality healthcare for everyone in the community.

Developing our workforce is one of the key pillars of our *Strategic Plan*. We are committed to supporting our frontline healthcare services, through developing and upskilling our staff, and promoting research, innovation and collaboration.

We want our people to be experienced and highly skilled—and above all, to be committed to exceptional care.

By investing in our staff we will be well placed to achieve our purpose of *Quality healthcare every day*.

Our strategy is based on four pillars:

PROVIDE EQUITABLE ACCESS TO EXCELLENT CARE

DELIVER GREAT VALUE

LEAD BY INNOVATING AND COLLABORATING

MAINTAIN AND DEVELOP AN EXCEPTIONAL WORKFORCE





INTEGRITY



COMPASSION



ACCOUNTABILITY



RESPECT



ENGAGEMENT



EXCELLENCE

OUR ICARE² VALUES ARE AT THE CENTRE OF HOW WE WORK AND INTERACT WITH ONE ANOTHER

Our values

Metro South Health's ICARE² values were created by employees, for employees, to inspire positive interactions in the workplace.

At Logan Hospital, we strive to create a culture where our ICARE² values are at the centre of how we work and interact with one another.

Promoting a positive workplace culture means our people can connect with each other, feel safe, welcome to contribute, and perform at their best.

Our values are embedded into our everyday business through our communications and documentation, recruitment, orientation and onboarding, professional development, performance development planning, recognition and reward programs and strategic and operational planning.

Our values also are integral to our service design and delivery processes. They guide the way we work and partner with our community and various health care experts to ensure those in our community receiving care have the best experience with us.

 LoganHospitalCareers.com.au

BE PART OF SOMETHING SPECIAL

About the Logan Hospital Expansion

Logan Hospital is currently undergoing one of Queensland's largest ever hospital expansion programs.

With a total capital investment of more than a billion dollars, the Logan Hospital Expansion is a suite of major construction projects that will increase the capacity of the hospital to provide more services for our community, closer to home.

The projects will deliver a significant increase in beds and treatment spaces across several new wards, as well as upgraded and expanded support services.

Working in partnership with our community, the Logan Hospital Expansion will deliver a world-class healthcare facility with people at its heart, supporting Metro South Health's vision of being Australia's exemplar public healthcare service, and ultimately delivering **a better way to care**.





What we're building

LOGAN HOSPITAL EXPANSION PROJECT

206 additional beds and treatment spaces with a range of upgraded and expanded clinical and support services across the hospital.

LOGAN HOSPITAL EXPANSION PROJECT STAGE 2

A new clinical services building with 112 additional beds and new operating theatres.

LOGAN MATERNITY REFURBISHMENT PROJECT

A major upgrade to our maternity service including six additional maternity beds, five additional birthing suites and 10 additional special care cots.

LOGAN URGENT AND SPECIALIST CARE CENTRE

A new community healthcare facility featuring a minor injury and illness service and Women's Health specialist services.

SATELLITE HOSPITAL (EIGHT MILE PLAINS)

A new healthcare facility providing a minor injury and illness service and day therapy services.

MODULAR MEDICAL WARD (WARD 2Q)

A new, 28-bed "complex discharge" ward for people with complex medical or social needs who require a longer hospital admission.

LOGAN HOSPITAL EXPANSION PROJECT

Our expansion project will increase the size of the hospital by almost half.

The project will deliver new wards and services across four new levels being built on an existing hospital building. It also includes major refurbishments across several other parts of the hospital.



206
additional beds
and treatment
spaces



4
new floors
with a range of
new services



refurbishment
and
expansion
of existing
services



health.qld.gov.au/LoganExpansion

Upgraded and expanded clinical services

The project will deliver a range of upgraded and expanded clinical services, including:

- » Five new medical wards
- » Emergency Department Short Stay
- » Coronary Care Unit
- » Transit Care Hub
- » Mental Health
- » Acute Care of the Elderly Unit
- » Palliative Care
- » Medical Imaging including a new MRI
- » Pathology
- » Cardiac Investigations
- » Respiratory Laboratory.

Expanded support services

The expansion also includes significant upgrades to critical supporting infrastructure:

- » Staff education and simulation suite
- » Griffith University medical student area
- » Medical staff room
- » Staff dining room
- » Kitchen expansion and upgrade to back of house offices
- » Central Clinical Equipment Service
- » Biomedical Technology Service
- » Building and engineering workshop.



ARTIST'S IMPRESSIONS OF A PATIENT ROOM WITHIN THE LOGAN HOSPITAL EXPANSION PROJECT



LOGAN HOSPITAL EXPANSION PROJECT STAGE 2

Stage 2 of our expansion will see the construction of a new clinical services building to provide even more beds and more operating theatres for Logan Hospital.

The new 'Building 4' will connect with existing hospital buildings and will provide a significant increase in surgical capacity.



112
additional
beds



10
operating
theatres



pharmacy and
endoscopy
services

Expanded clinical services

The new building is planned to feature:

- » Four new surgical wards
- » Ten new operating theatres (an increase of two on the existing capacity)
- » Intensive Care/High Dependency Unit
- » Pharmacy
- » Endoscopy
- » Catheterisation laboratories (including an interventional radiology laboratory)
- » Sterilising services unit.



health.qld.gov.au/LoganExpansion

LOGAN MATERNITY REFURBISHMENT PROJECT

We're building a bigger, better Logan Maternity service for our community.

The refurbishment project will deliver:

- » modern facilities that meet the needs and expectations of new mothers and their families
- » facilities that support leading models of care
- » greater birthing choice, including eight new birthing pools for labour and birth
- » dedicated facilities for partners, families and visitors
- » enhanced privacy with a mix of single and double rooms with ensuites in the inpatient unit
- » a dedicated, 24-hour Logan Maternity reception area and access road
- » rooming-in capability for parents and babies within the Special Care Nursery.



6
additional
maternity
inpatient beds



5
additional
birthing suites



10
additional
special care
cots



health.qld.gov.au/LoganMaternity



ARTIST'S IMPRESSION OF A BIRTHING SUITE WITH BIRTHING POOL



■ COMPLEX DISCHARGE WARD

Alongside our major expansion projects, we're building a new medical ward to provide a specially designed facility for patients who require a longer stay in hospital.

The facility—which will be known as 'Ward 2Q'—will be a complex discharge ward, caring for patients with complex medical or social needs who cannot be safely discharged to their usual place of residence or care setting.

It will include a mix of single and shared rooms, with design features to provide a homely space and natural light to aid in patient recovery.



28
new inpatient
beds



mix of single
and shared
rooms



modular ward
allowing rapid
construction



health.qld.gov.au/LoganExpansion



ARTIST'S IMPRESSION OF THE MEADOWBROOK HEALTH CENTRE — HOME OF THE LOGAN URGENT AND SPECIALIST CARE CENTRE

LOGAN URGENT AND SPECIALIST CARE CENTRE

Situated across the road from Logan Hospital, the Logan Urgent and Specialist Care Centre (LUSCC) forms part of a health centre development being constructed by a local developer in Meadowbrook.

The project is being delivered in parallel to the main Logan Hospital Expansion, with additional outpatient capacity to match the increase in inpatient beds at the hospital.

Within the centre, Logan Hospital will provide:

- » a minor injury and illness centre
- » a Women's Health outpatient centre
- » supporting services including ultrasound and x-ray imaging, pharmacy and pathology collection.



12
minor injury
and illness
centre spaces



31
Women's
Health consult
rooms



pharmacy,
pathology
and medical
imaging
services

■ SATELLITE HOSPITAL (EIGHT MILE PLAINS)

The Eight Mile Plains Satellite Hospital is one of seven new healthcare facilities being delivered in South East Queensland under the Queensland's Government's Satellite Hospital Program.

Managed by Logan Hospital, the facility will be designed to provide healthcare services, closer to home for the rapidly growing community.

The Eight Mile Plains Satellite Hospital will include:

- » a minor injury and illness centre
- » day therapies including renal dialysis and chemotherapy.



minor injury
and illness
centre



renal
dialysis
chairs



chemotherapy
day treatment



RESEARCH TO BENEFIT FUTURE GENERATIONS

Research opportunities at Metro South Health

At Logan Hospital, you'll have access to the wider Metro South Health research network.

This includes strong links with Princess Alexandra Hospital, one of Australia's leading healthcare research institutions and home to Australia's most advanced medical research facility, the Translational Research Institute (TRI).

We have highly developed research programs across a wide range of health specialty areas, including cancer, medical, surgical, mental health, rehabilitation and allied health services.

And as Australia's first digital health service, we're uniquely positioned at the forefront of healthcare

innovation and technology. Through our fully electronic medical record, researchers have access to rich clinical data from across our facilities and services.

We're committed to ensuring all research conducted within our facilities, or in collaboration with external partners, is of the highest ethical and scientific standard, and is undertaken in a manner that provides the best outcomes for our consumers, our community, our researchers and our organisation.

Metro South Health has a strong history of research achievements, outstanding facilities and resources, strong partnerships, and world-leading technology.

This provides an ideal research environment to bring research ideas to fruition, ultimately for the benefit of our community.



>1000
active research projects



937
research publications in 2020-21



520
active clinical trials



\$25M
direct research expenditure (2020-21)

Key research partnerships





WE'RE AT THE FOREFRONT OF HIGH-TECH HEALTHCARE

Innovative ways to care

Across Logan Hospital, our clinicians are finding new and innovative ways to provide the best care for our patients—whether it's pioneering the use of new technology or through advanced models of care.

Some of our recent advancements include:

- » Australian-first technology within our ENT service to treat people with vestibular dizziness
- » Queensland's first health justice partnership to support women experiencing domestic and family violence
- » a new, multi-disciplinary home-based model of care for patients requiring rehabilitation
- » a "mental health lounge" model and facility providing a quiet, calm environment for people experiencing mental health concerns within the emergency department
- » dedicated nursing and midwifery navigator roles who provide ongoing care for people with complex health concerns.

A digital hospital

In 2017, Logan Hospital became one of Queensland's first fully digital hospitals. In a digital hospital, clinicians have instant, real-time information about patients at the point of care through digital workstations instead of paper files.

Each patient's electronic record now travels with them—wherever they are on their healthcare journey.

At Logan Hospital:

- » vital signs, radiology, medications and test results are seamlessly integrated into the system
- » clinicians have access to early warning alerts in a medical emergency
- » patients are accurately identified through wristbands with unique barcodes
- » medical grade wi-fi is available in all areas
- » full training is provided on the integrated electronic medical record system
- » rich data and analytics are available for research and quality improvement.

TAKE YOUR CAREER TO THE NEXT LEVEL

There's never been a better time to join Team Logan

You'll be joining Logan Hospital at the most exciting time in its 32-year history.

Our major expansion program represents a once-in-a-lifetime opportunity to build a long-term career, with countless opportunities to learn and grow, no matter your role.

The expansion will create more than 1500 new jobs across clinical and support services, with recruitment staggered across 2022–2024 to align with the ramp up of services.

There are also opportunities for our existing staff, with many team members transitioning from existing services to our new and expanded facilities.



1500+
new jobs

- Nursing and Midwifery
- Medical
- Allied Health
- Operational Support
- Administration





TOP REASONS TO JOIN TEAM LOGAN

- » We're one of the most **culturally diverse areas of Queensland**. We celebrate our diversity, skills, traditions and customs and recognise diversity as being one of our greatest strengths.
- » We're a **values based organisation** that takes pride in providing a work environment that empowers our people to be the best in serving our community, is safe, flexible, satisfying, builds capabilities, encourages professional development, promotes work-life balance and supports staff to maximise their health and wellbeing.
- » We offer **extensive supervision, teaching and simulation training** across all clinical professions, and we pride ourselves on our approach to multi-disciplinary and cross-departmental education activities.
- » We **actively seek feedback** from our staff, and we recognise individuals and teams, and the incredible work they do through our staff recognition program.
- » We **value the significant efforts of our staff** as leaders, carers, clinicians, researchers, innovators and collaborators.
- » We're **ideally located** halfway between Brisbane and the Gold Coast. Logan City also offers a wealth of hidden treasures: including beautiful natural bushland and native wildlife; heart pumping adventure for lovers of sport and recreation; while arts, culture and heritage enthusiasts will enjoy the historic landmarks that capture the city's history and cultural diversity.



OUR COMMITMENT TO YOU

What you can expect at Logan Hospital

- » You'll be part of a **large, diverse and highly experienced team** where you'll not only contribute to outstanding patient care but also learn and grow your own knowledge and skills.
- » You'll have access to a **range of benefits** as part of your employment, such as flexible working arrangements (including support for mothers returning to work after parental leave), health and wellbeing programs, competitive salary and superannuation, salary packaging, support for development and employment security.
- » You'll be **supported in your induction** to Logan Hospital, which includes an introduction to your work unit and colleagues, establishment of your performance objectives, as well as continuous feedback and support through robust conversations with your manager.
- » You'll have **access to training and skills development opportunities** with dedicated clinical educators in each discipline, leadership and development programs, simulation facilities and cross-departmental education.
- » You'll have **opportunities for career development** by applying for temporary secondments and higher duties that will enable you to expand your experience and capabilities in different roles, departments and locations.
- » You'll have **access to the study and research assistance scheme** that allows eligible employees to apply for funding and/or leave to gain formal qualifications or undertake research that contributes to departmental goals.
- » You'll have access to **outstanding facilities and resources, strong partnerships, and world-leading technology** to pursue innovation in patient centred healthcare—we encourage team members to come up with great ideas and better ways of delivering care.

Diversity and inclusion

We recognise our strength comes from the diversity of our people and so we encourage and welcome applications from everyone to apply for roles within our health service. We are an equal opportunity employer that values creating a diverse and inclusive workplace for our people and our community.

READY TO JOIN TEAM LOGAN?

How to apply

We'll be regularly posting new positions on our website as they are established between now and 2024.

We use a merit-based approach to support our recruitment decisions. This simply means finding the right person for the job based on their skills, knowledge, experience, qualifications and alignment to our values.

Applying for a role with us? You can expect to be involved in relevant practical skills assessments and values assessment specific to the role you have applied for.

Current jobs

Visit the Logan Hospital Careers website to view our current job vacancies, and to read more about what it's like to work at Logan Hospital:



© State of Queensland (Metro South Hospital and Health Service) 2022

For more information, contact:

Logan Hospital Expansion Program, Cnr Loganlea and Armstrong Rds, Meadowbrook, Qld 4131
LHEPWorkforce_Recruitment@health.qld.gov.au