

Role Description

Enrolled Nurse - Metro North Health

Job ad reference:	MN579495		
Location*:	Various locations across Metro North Health	Unit/Department:	Various unit / facilities across Metro North Health
Status:	Permanent full or part time Hours negotiable Or Fixed Term Temporary Full or part time Hours negotiable Or Casual	Classification:	Nurse Grade (NG) 3
Salary Range:	\$35.93 - \$46.90 (plus superannuation and leave loading benefits) Casual positions are not entitled to leave loading benefits.	Closing Date:	30 th June, 2025 Applications will be reviewed as they are received
Contact name:	Casey Downs Nurse Manager Centralised Recruitment	Contact number:	(07) 3646 0191
Online applications:	www.smartjobs.qld.gov.au		

* Please note: there may be a requirement to work at other facilities located across Metro North Health.

**Future recurring vacancies may also be filled through this recruitment process at any location across Metro North Health.

***Applications from third parties will not be accepted.

About the Role

Generic Level Classification Statement

- a) An employee who is an enrolled nurse who supports a registered nurse/registered midwife in the provision of patient centred care as specified by registration requirements, NMBA standards and codes, educational preparation, relevant legislation and context of care.

Autonomy

A Nurse Grade 3 is an Enrolled Nurse (EN) who:

- a) Practices under the direct or indirect supervision of a Registered Nurse/Midwife assisting with the care of recipients of healthcare services as delegated by the Registered Nurse/Midwife.
- b) Seeks assistance and support in decision making from a Registered Nurse/Midwife.

Purpose of the role

The purpose of this role is to provide evidence-based consumer/person focused care, under the supervision of a Registered Nurse/Midwife, in collaboration with the interprofessional health care team to facilitate optimal health outcomes for the recipients of healthcare services and undertake delegated activities while assuming individual accountability for actions within the position and context of practice.

Context and Delegations

- This role reports directly to the Nurse Manager/Nurse Unit Manager.
- This role will work directly with staff within the allocated ward / unit / department / service, Metro North Health.
- This role has no direct financial and human resource delegations.

Key Accountabilities

This successful applicant will carry out the following key accountabilities in accordance with the Metro North Health's values and the corresponding Lominger™ competencies:

- Fulfil the responsibilities of this role in accordance with Schedule 2, Nurses and Midwives (Queensland Health Award) (2015) - Generic Level Statements Nurse Grade 3 and the Queensland Health and Metro North Health's commitments and values, in achievement of the organisational goals and Domains of Practice.
- Practice in accordance with code of ethics, professional standards and legislation affecting nursing practice by maintaining current knowledge and competence within scope of position.
- Contribute to the nursing assessment and care of individuals and groups by practicing within their Scope of Practice as an Enrolled Nurse, implementing those aspects of the nursing care plan delegated by the Registered Nurse/Midwife and by providing information in the evaluation of progress towards expected outcomes.
- Respond appropriately and report sudden alterations in the health status of the consumer/person to the Registered Nurse/Midwife.
- Support an evidence-based learning environment and participate in learning activities/opportunities for self and others.
- Participate in performance development and planning activities.
- Assist in identifying risks and opportunities for improvement and change to promote safe work activities, report workplace incidents and participate in collaborative review of systems and processes.
- Practice collaboratively with the interprofessional health care team to promote the safety, security and personal integrity of individuals and groups.
- Contribute to the effective functioning of the clinical area, in the provision of a safe environment and quality care for individuals and groups.
- Utilise communication processes and systems which enhance consumer/person care delivery and unit functioning.
- Undertake, and participate in ethical decision making in the achievement of organisational goals.
- Comply with and utilise procedures, policies, regulations and standards which impact upon position including contemporary human resource management requirements and practices such as workplace health and safety, equal employment opportunity and anti-discrimination policies.

About Metro North Health

Delivering outstanding health services is just one of the ways that we care for our community. Our passion for people is reflected in the way we do our work and live our values every day. We value and nurture our team members so they can provide quality value based care to our patients across our diverse organisation. Our focus on Value Based Healthcare means we expect our staff to deliver the care the patient needs, no more and no less, to achieve the best quality of life for our community. This passion fuels our collaborative culture of innovation and research.

We embrace the diversity of local and greater communities as we provide services to people throughout Queensland, northern New South Wales and the Northern Territory, in all major health specialities including medicine, surgery, mental health, cancer care, trauma, women's and newborn care, and more than 30 sub-specialities. Metro North Health services include rural, regional and tertiary hospitals, and community and oral health services.

Our diverse Health Service provides a wide variety of rewarding career paths across our tertiary/quaternary referral hospitals, secondary hospitals, community health centres, residential and extended care facilities and regional community hospitals. We expect our staff and volunteers to translate our values into action through providing high quality connected care that is relevant, efficient and respectful of our patients' needs and wishes. Our people are passionate about our community and patients, with a focus on putting people first. Come and work where people are at the centre of everything we do and your contribution is truly valued.

Health Equity and Racism



Metro North Health has set out its actions and agreed key performance measures to improve Aboriginal and Torres Strait Islander people's health and wellbeing outcomes.

Racism is a key structural determinant of Aboriginal and Torres Strait Islander people's health inequity. Racism is not always conscious, explicit, or readily visible - often it is systemic. Systemic or institutional racism are forms of racism that are widely and deeply embedded in systems, laws, written or unwritten policies and well-established practices and beliefs that produce, condone, and perpetuate widespread unfair treatment, causing and/or contributing to inherited disadvantage.

It is expected that all Metro North Health staff, including the incumbent of this role as a valuable member of the Metro North workforce, contribute to the health equity agenda and meet the intent of supporting the defined six actions that specifically meet the needs of Aboriginal and Torres Strait Islander people within the National Safety and Quality Health Service Standards (NSQHS), by actively supporting the elimination of racial discrimination and institutional racism; supporting increased access to health care; influencing the social, cultural and economic determinants of health; supporting the delivery of sustainable, culturally safe and responsive health services; and recognise the importance of working with Aboriginal and Torres Strait Islander peoples, communities and organisations to design, deliver, monitor and review the health and support services we provide.

Please visit our website for additional information about Metro North Health. <http://metronorth.health.qld.gov.au/>

Our Vision

Excellent healthcare, working together, strong and healthy communities.

Metro North Health Values and their corresponding Lominger™ competencies:



Respect

- Interpersonal savvy
- Manages conflict
- Communicates effectively
- Balances stakeholders



Teamwork

- Collaborates
- Develops talent
- Values differences
- Builds effective teams



Compassion

- Customer / patient focus
- Demonstrates self-awareness
- Manages ambiguity
- Being resilient



High performance

- Cultivates innovation
- Action oriented
- Drives results
- Drives vision and purpose



Integrity

- Decision quality
- Ensures accountability
- Courage
- Manages complexity

How you will be assessed

You will be assessed on your ability to demonstrate the following values within the context of the “Key Accountabilities”. The ideal applicant will be able to demonstrate the following:

- **Respect** – demonstrates interpersonal savvy, manages conflict appropriately, communicates effectively and balances the needs of all stakeholders with utmost respect to all people at all times.
- **Teamwork** – collaborates effectively, develops talent, values differences and builds effective teams to bring about best use of resources to deliver healthcare services.
- **Compassion** – is patient / client focussed, demonstrates self-awareness and the effects of behaviour on others, deals with or manages ambiguity and complexity, demonstrates resilience in the delivery of patient services or support in the delivery of services to patients.
- **High Performance** – cultivates innovation, is action oriented, drives results and supports Metro North Health’s vision and purpose to exceed expectations of our patients and stakeholders.
- **Integrity** – demonstrates sound decision quality, ensures accountability, demonstrates courage in the face of adversity and works effectively / manages complexity to ensure work output and decisions are ethical and invariably of a high standard.

Mandatory qualifications/professional registration/other requirements

- Appointment to this position requires proof of qualification and registration with the Nursing and Midwifery Board of Australia (NMBA) as an Enrolled Nurse (EN). Certified copies of the required information must be provided to the appropriate supervisor/manager prior to the commencement of employment.
- It is a condition of employment for this role for the employee to be, and remain, vaccinated against the following vaccine preventable diseases during their employment ([Health Employment Directive No. 01/16](#)):
 - Measles, mumps, rubella (MMR)
 - Varicella (chicken pox)
 - Pertussis (whooping cough)
 - Hepatitis B
 - Tuberculosis
- **Disclosure of Serious Disciplinary History:** Under the [Public Sector Act 2022](#), applicants are required to disclose any previous serious disciplinary action taken against them.
- This position may be required to travel and work across Metro North Health facilities/directorates.

Annual Mandatory Training Requirements

- Basic Life Support (BLS)
- Fire Safety – General evacuation instructions and first response evacuation
- Patient Handling Techniques
- Cytotoxic Safety (Category 1)
- Supporting All Families Everyday (SaFE)
- Infection Control
- BloodSafe® – Transporting Blood

How to apply

Please provide the following information to the panel to assess your suitability:

1. **Your current CV or Resume, including referees.** You must seek approval prior to nominating a person as a referee. Referees should have thorough knowledge of your work performance and conduct, and it is preferable to include your current/immediate past supervisor. By providing the names and contact details of your referee/s you consent for these people to be contacted by the selection panel. If you do not wish for a referee to be contacted, please indicate this on your CV or Resume.

And

2. **Complete and submit the required pre-employment following documents with your application:**
 - Application Screening Questionnaire
 - Justice of the Peace (JP) certified identification (x3)
 - Employee Screening Consent Form
 - Vaccine Preventable Disease Evidence/Consent form
 - Vaccine Preventable disease Evidence
 - Tuberculosis Risk Assessment Form

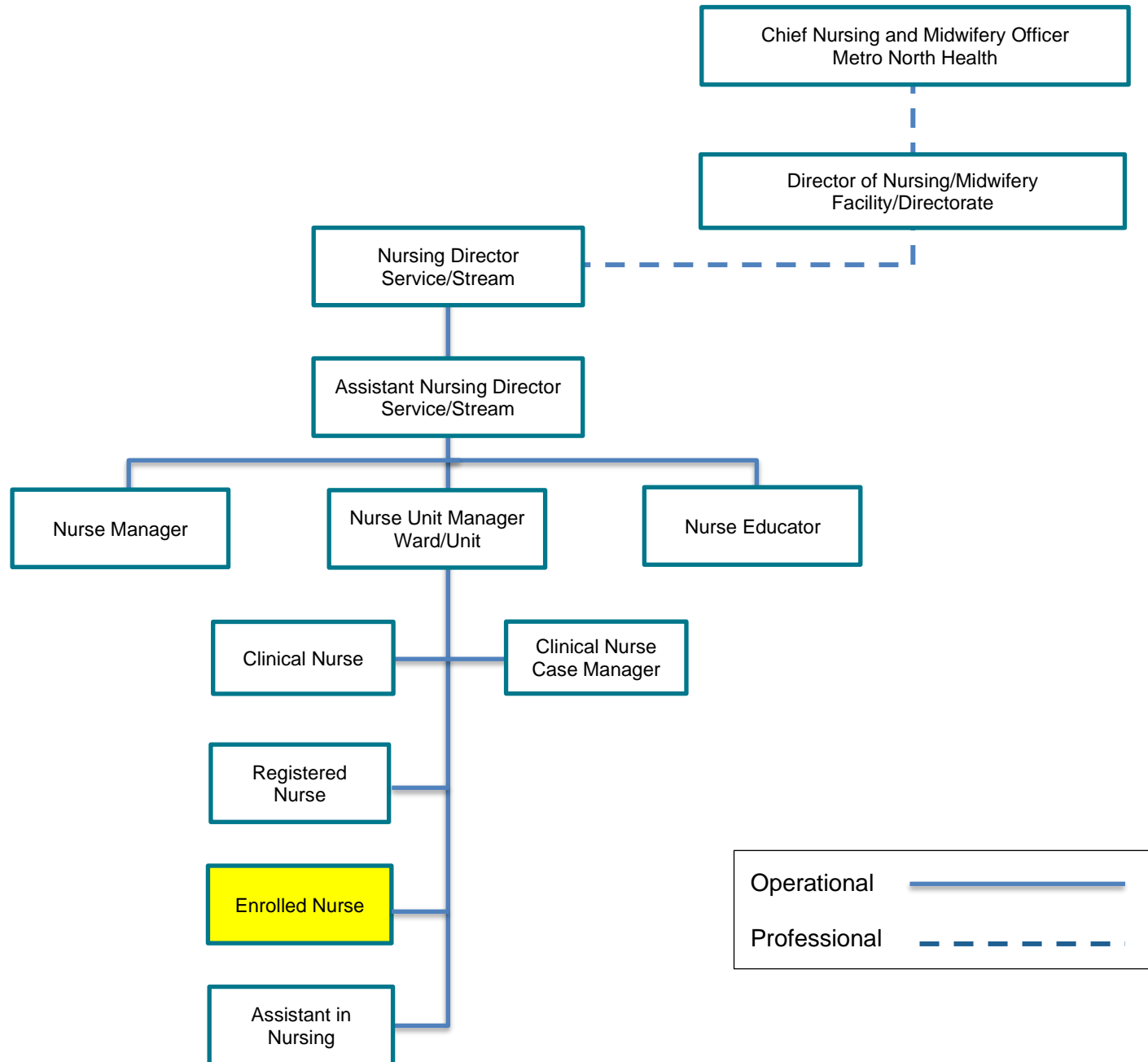
Non-Australian Citizen Applicants:

- Authority to obtain Visa Entitlement Verification Online (VEVO)

Instructions on how to apply

- Submit your application online at www.smartjobs.qld.gov.au by the closing date.
- Please note that hand delivered applications will not be accepted.
- Only those persons eligible to work in Australia may be employed by Metro North Health. Prospective employees are required to provide proof of identity and documentary evidence of their right to work in Australia.
- Late applications cannot be submitted online. For a late application to be considered, please arrange approval and submission via the contact office.

Team Structure



Diversity and Inclusion

We are committed to providing a diverse and inclusive workplace for our people and our community. We encourage people of all genders, races, ages and abilities to apply for roles within Metro North Health and strive to ensure that our workplace is free from all forms of discrimination and harassment.

As an Equal Employment Opportunity (EEO) employer we ensure that our selection processes and employment decisions are undertaken in a non-discriminatory way and are consistent with the requirements of the Anti-Discrimination Act 1991. If there are any reasons that you may have challenges with the recruitment process, please let us know when we contact you.

Work Health and Safety

We are committed to *Putting People First* to provide better healthcare. This commitment includes a dedicated *People Focussed Safety* culture.

This culture commits to the health, safety and wellbeing of staff, volunteers and other persons, through the provision of a dynamic and comprehensive Health and Safety Management System (HSMS). The HSMS provides for proactive safety initiatives, early injury management practices with a strong focus on a safe and durable return to work.

The provision of a Health and Safety environment within Metro North Health is everyone's responsibility.

Safety and Quality

Relevant to the position, staff participate in the ongoing education, implementation, monitoring and evaluation of safety and quality initiatives relevant to The National Safety and Quality Health Services Standards 2nd Edition and the Australian Council on Healthcare Standards (ACHS).

Vaccine Preventable Diseases (VPD) Requirements ([Health Employment Directive No. 01/16](#))

It is a condition of employment for this role for the employee to be, and remain, vaccinated against the following vaccine preventable diseases during their employment:

- Measles
- Mumps
- Rubella
- Varicella (chicken pox)
- Pertussis (whooping cough)
- Hepatitis B

Further vaccinations may be required due to particular risks for a role; examples include:

- Hepatitis A – Workers in regular contact with untreated sewerage
- Q Fever – Research or Laboratory staff regularly handling specimens

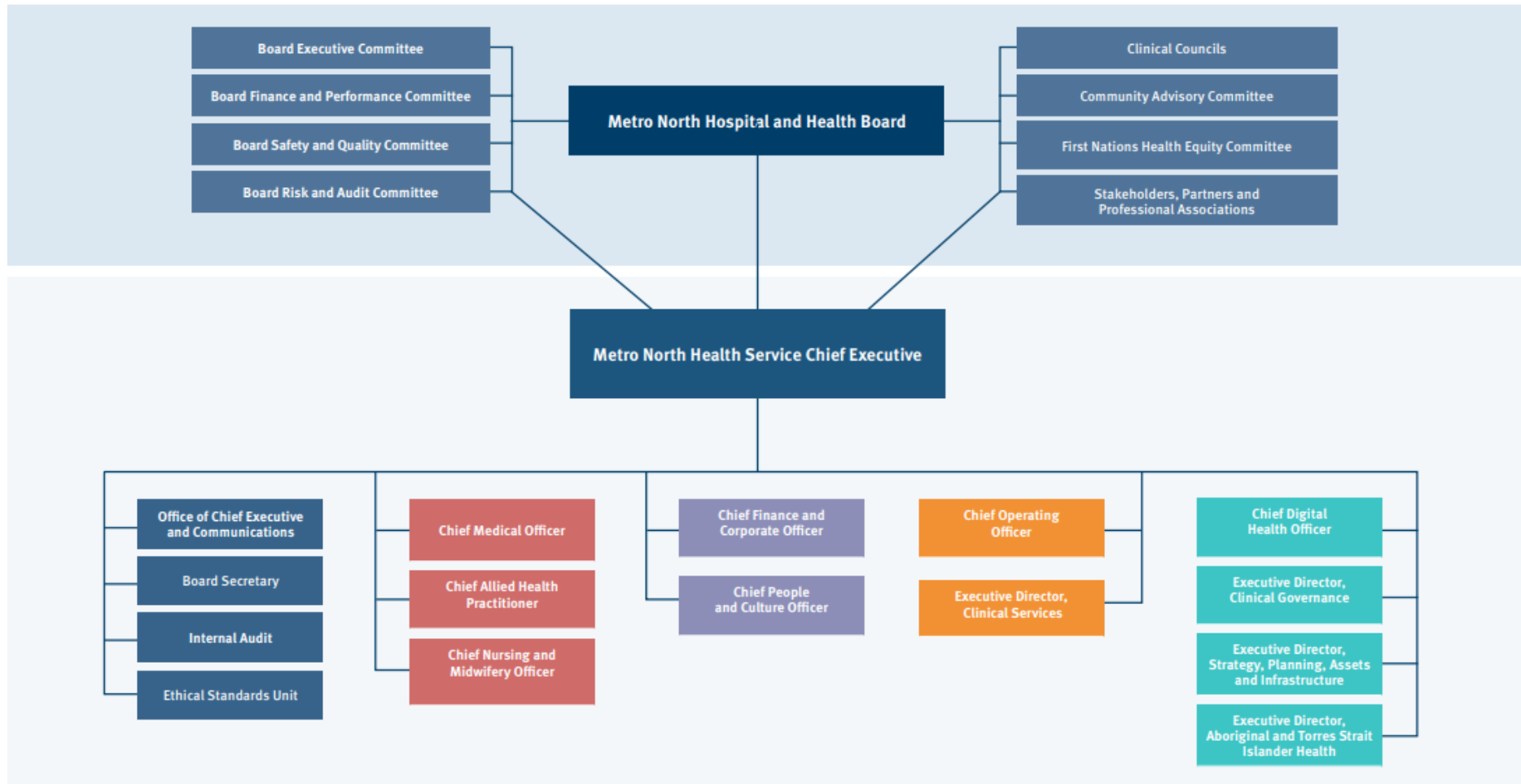
All new employees who will be working in clinical areas must be assessed for their risk of tuberculosis and screening undertaken if required.

Existing staff that are engaged prior to 1 July 2016 are **not subject** to this condition of employment unless they apply for a role with VPD requirements that is with a different Queensland Health entity (i.e. one Health Service to another Health Service, Department of Health (DoH) to a Health Service, or Health Service to DoH).

Additional Information

- Applications will remain current for 12 months or for the duration of the vacancy.
- Future vacancies of a temporary, full time and part time nature may also be filled through this recruitment process.
- Health Care Workers in Queensland Health whose occupation poses a potential risk of exposure to blood or body fluids must be immunised against Hepatitis B according to the National Health and Medical Research Council Australian Immunisation Handbook and the Queensland Health Infection Control Guidelines.
- Pre-employment screening, including criminal history and discipline history checks, may be undertaken on persons recommended for employment. Roles providing health, counselling and support services mainly to children will require a Blue Card, unless otherwise exempt. Roles providing services to National Disability Insurance Scheme (NDIS) participants require an NDIS worker screening check.
- Applicants may be required to disclose any pre-existing illness or injury which may impact on their ability to perform the role.
- Applicants will be required to give a statement of their employment as a lobbyist within one (1) month of taking up the appointment. Details are available at:
https://www.forgov.qld.gov.au/_data/assets/pdf_file/0033/185919/lobbyist-disclosure-policy_0.pdf
- Employees who are appointed to Queensland Health may be required to undertake a period of probation appropriate to the appointment. For further information, refer to Probation HR Policy B2:
<https://www.health.qld.gov.au/system-governance/policies-standards/doh-policy/policy/qh-pol-197.pdf>
- All relevant health professionals, who in the course of their duties formulate a reasonable suspicion that a child or youth has been abused or neglected in their home/community environment, have a legislative and a duty of care obligation to immediately report such concerns to Child Safety Services, Department of Communities.

Metro North Health Executive Structure



EFFECTIVE DATE: 08/2023

Metro North Health



Queensland Government